

South Gloucestershire Landscape Character Assessment

Annex II: Strategic Viewpoints

South Gloucestershire Council

Final Draft Report for Adoption Chapter 24

Prepared by LUC

September 2024



Version	Status	Prepared	Checked	Approved	Date
1	Draft Method and Pilot	E White L Jewitt	K Davies	K Davies	03.04.2023
2	Draft Report	L Jewitt V Kakar	E White	K Davies	16.05.2023
3	Draft Report	E White L Jewitt	E White	K Davies	14.07.2023
4	Final Draft	E White L Jewitt	E White	K Davies	01.11.2023
5	Final Draft (updated following New Local Plan Phase 3 consultation)	L Jewitt	E White	K Davies	12.06.2024
6	Final Draft Report for Adoption	L Jewitt	E White	K Davies	11.09.2024



Land Use Consultants Limited

Registered in England. Registered number 2549296. Registered office: 250 Waterloo Road, London SE1 8RD. Printed on 100% recycled paper

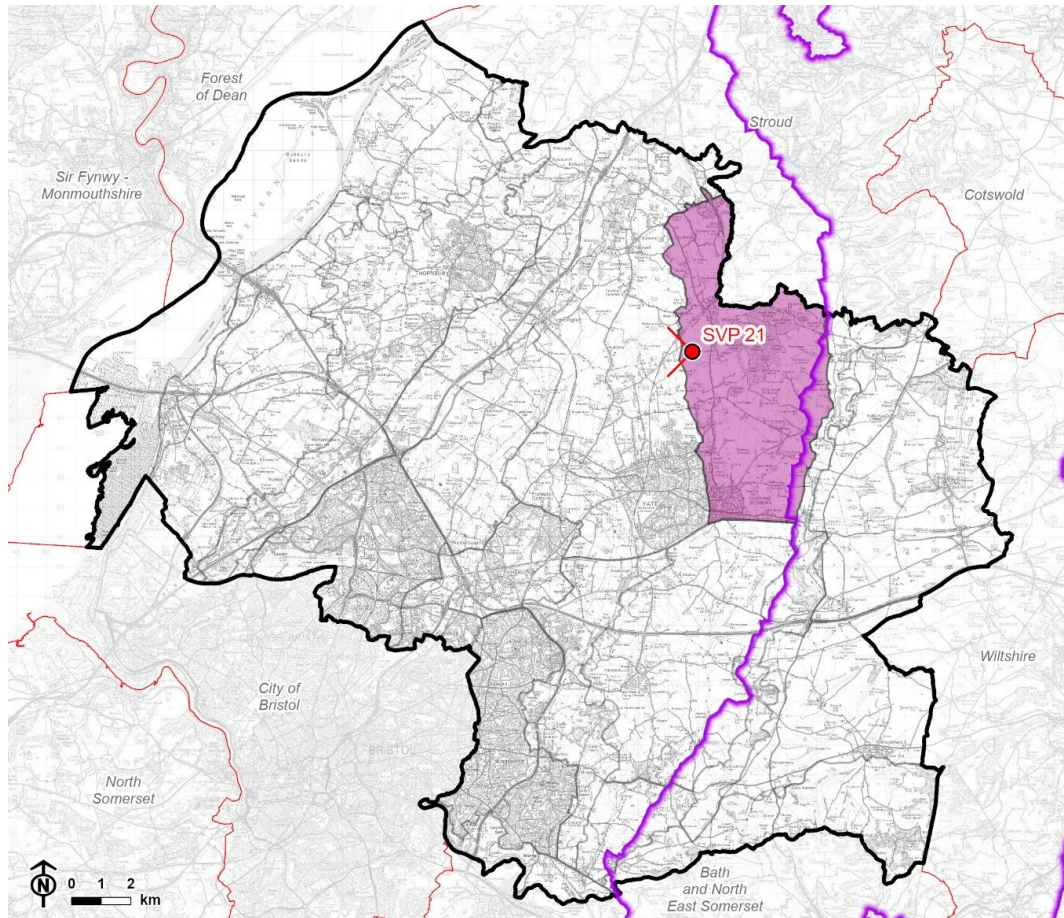
Contents

Chapter 24	178
Strategic Viewpoint 21: Wickwar Ridge	
Characteristics	183
Summary	184

Chapter 24

Strategic Viewpoint 21: Wickwar Ridge

Figure 24.1: Location of Strategic Viewpoint 21 and landscape character context



© Natural England copyright © Crown copyright and database rights, Ordnance Survey licence number 100023410 (2024).

CB:HS, EB:shayler_h LUC 12274_FiguresUpdates_MayJune2024 07/06/2024
Source: LUC, SGDC, NE, OS


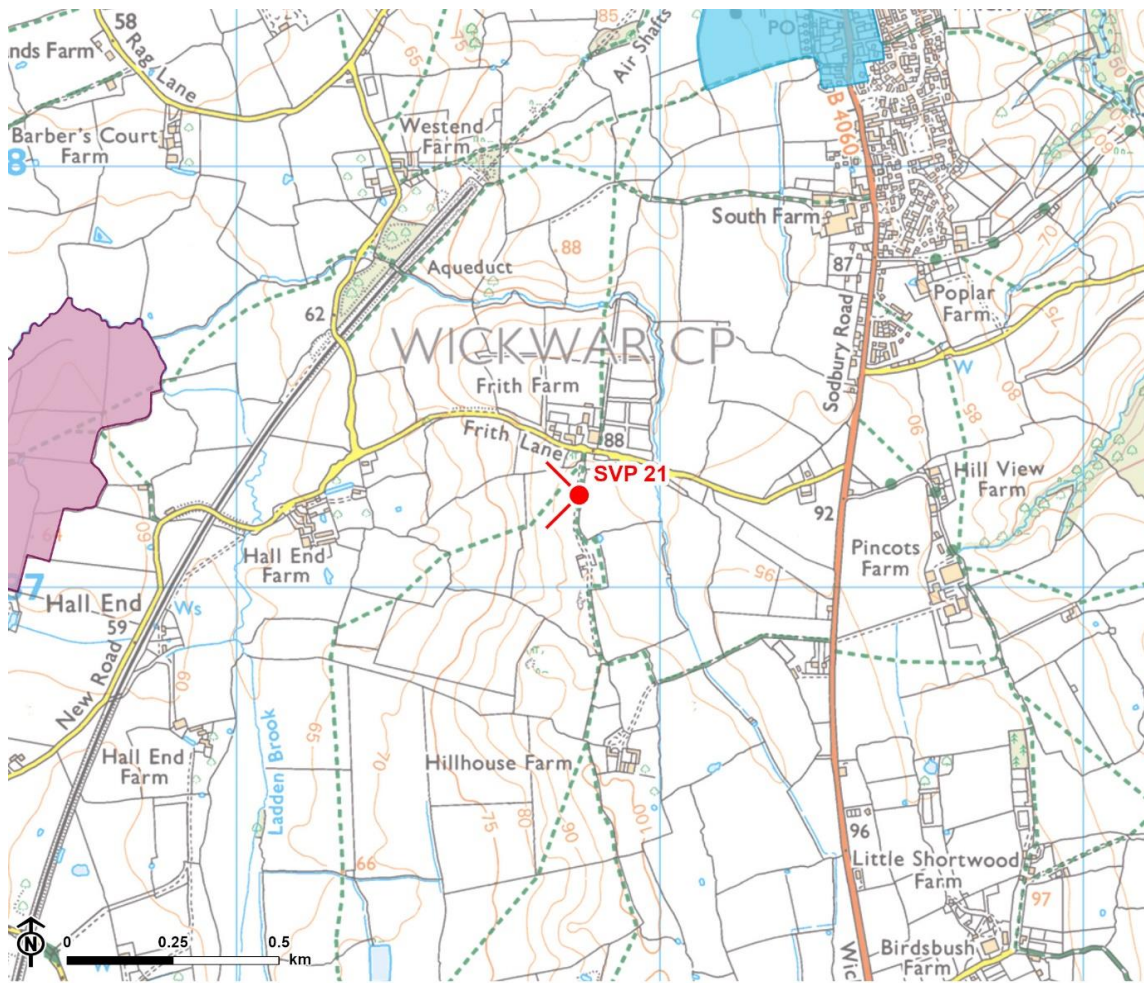


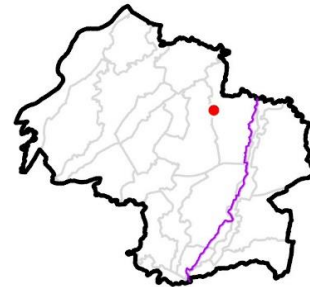
-  Council boundary
-  Neighbouring local authority
-  Cotswolds National Landscape (AONB) boundary
-  LCA 5: Wickwar Ridge and Vale
-  Strategic viewpoint and angle

Figure 24.2: Detailed map of the location of Strategic Viewpoint 21



© Natural England, © Historic England, Contains Ordnance Survey data © Crown copyright and database rights, Ordnance Survey licence number 100023410, 2024.

-  Council boundary
-  Cotswolds National Landscape (AONB) boundary
-  Conservation area
-  Scheduled monument
-  Strategic viewpoint and angle



Viewpoint Information

Grid reference: ST 71807 87250

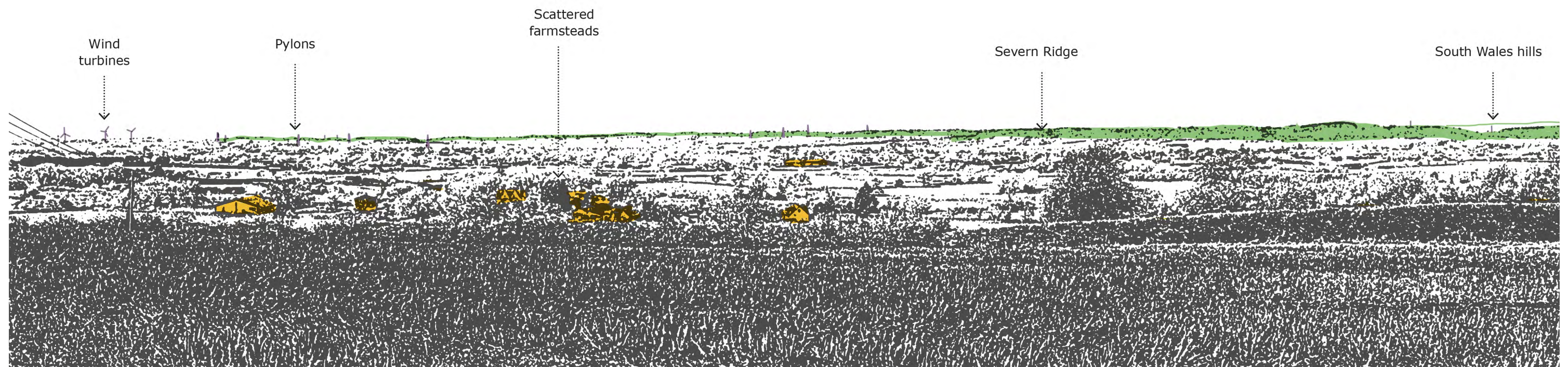
View location: On public footpath LYA/12/20, south of Frith Lane, near Wickwar.


View direction: Views north-west across LCA 8: Yate Vale and towards LCA 17: Rudgeway and Tytherington Ridge. Views south-west towards LCA 10: Earthcott Vale.

Relationship with Visually Important Hillside (VIH): The viewpoint is located on the elevated, linear plateau landform above the Wickwar Ridge VIH, and represents views experienced from it.

Experienced by: Pedestrians along Frith Lane, and recreational users of public footpaths LYA/12/20 and LYA/10/10.

Figure 24.3: View Composition of Strategic Viewpoint 21



 Key landscape feature

 Landmark / historic feature


 Detractive feature

Figure 24.4: Full Panoramic Photograph of Strategic Viewpoint 21



Strategic Viewpoint 21: Wickwar Ridge



Strategic Viewpoint 21 (continued)

Characteristics

Popularity, access and facilities

- Views from this viewpoint are representative of those described in LCA 5: Wickwar Ridge and Vale which states that there are "*expansive westward views across the landscapes to the north of Yate*".
- The viewpoint is publicly accessible from Frith Lane on footpath LYA/12/20.

Quality, value and features of the view

- An elevated viewpoint providing panoramic (180°) views west across the settled rural landscape of Yate Vale (characterised by medium-scale mixed use fields interspersed with scattered farmsteads, small copses and shelterbelts, and woodlands). In views to the south-west from here and the linear plateau lying east of SVP 21, the wooded slopes of the Tytherington Ridge and the Severn Ridges beyond form notable landform features and provide a sense of containment to the view. The hills of South Wales form a backdrop to long-distance views west and south-west.
- The Purdown BT Tower in Bristol is a distant landmark feature (15km away).
- A locally distinctive group of three wind turbines near Tytherington (7km away), several pylon lines, industrial development at Avonmouth (visible in long distance views) and large light-coloured warehouses at Yate industrial estate to the south slightly detract from the overall composition of the view.

Summary

The Wickwar Ridge viewpoint is categorised as a SVP as it meets most of the criteria to some extent. It is noted in the South Gloucestershire Landscape Character Assessment as being a natural observation point from which to appreciate the landscape; it is located on a public footpath; and it provides a panoramic view that takes in the notable landscape features of the Yate Vale, the Tytherington Ridge, the Severn Ridges, the hills of South Wales, and the landmark feature of the Purdown BT Tower.

Report produced by LUC

Report produced by LUC

Bristol

12th Floor, Colston Tower, Colston Street, Bristol BS1 4XE

0117 929 1997

bristol@landuse.co.uk

Cardiff

16A, 15th Floor, Brunel House, 2 Fitzalan Rd, Cardiff CF24 0EB

0292 032 9006

cardiff@landuse.co.uk

Edinburgh

Atholl Exchange, 6 Canning Street, Edinburgh EH3 8EG

0131 202 1616

edinburgh@landuse.co.uk

Glasgow

37 Otago Street, Glasgow G12 8JJ

0141 334 9595

glasgow@landuse.co.uk

London

250 Waterloo Road, London SE1 8RD

020 7383 5784

london@landuse.co.uk

Manchester

6th Floor, 55 King Street, Manchester M2 4LQ

0161 537 5960

manchester@landuse.co.uk

landuse.co.uk

Landscape Design / Strategic Planning & Assessment

Development Planning / Urban Design & Masterplanning

Environmental Impact Assessment / Landscape Planning & Assessment

Landscape Management / Ecology / Historic Environment / GIS & Visualisation